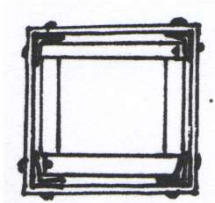
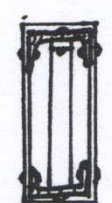


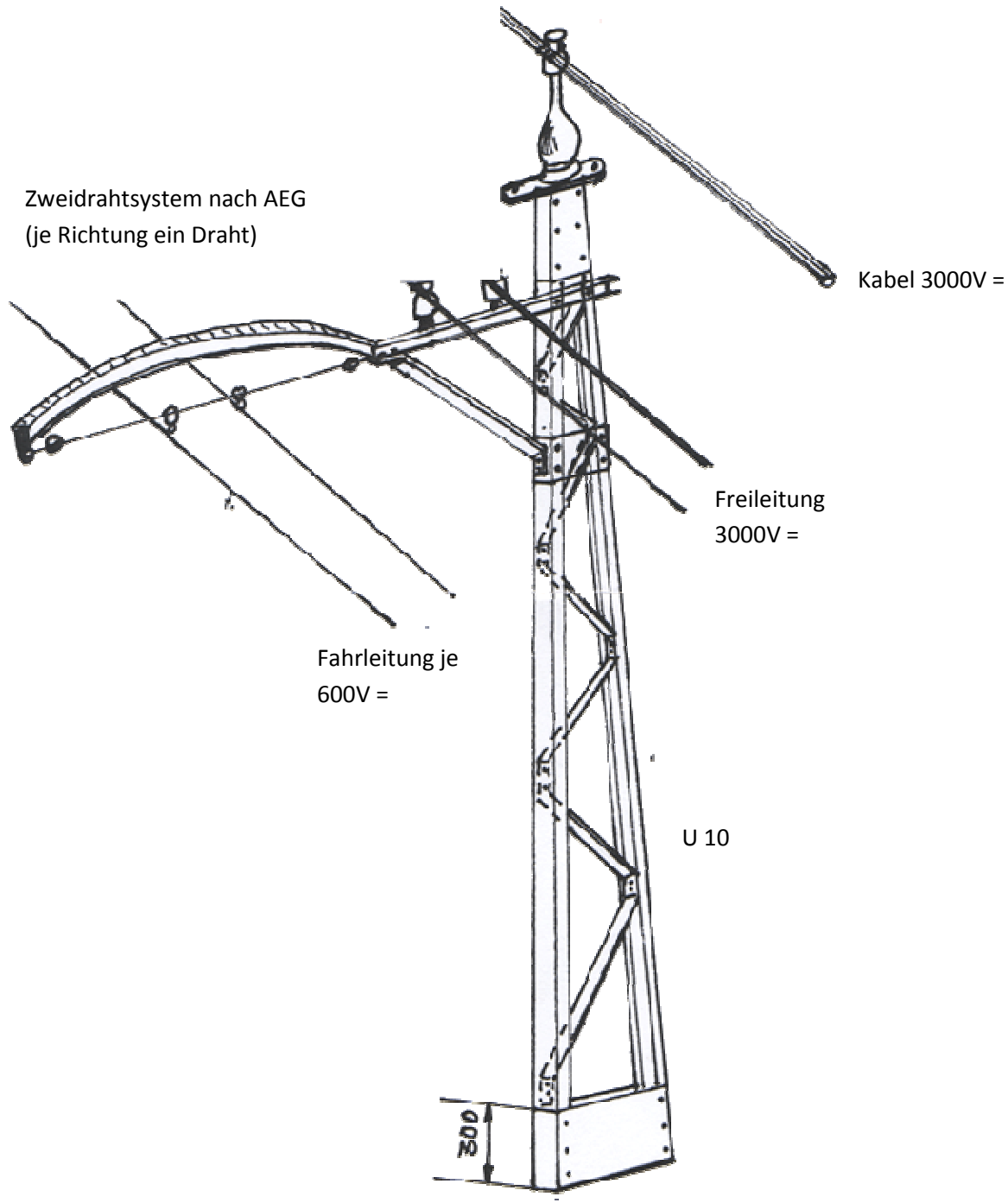
Details für Masten der „Elektrischen Kleinbahn im Mansfelder Bergrevier“



Quadratmast für Kurvenstrecken (genietet)



Einfacher Mast für gerade Strecken (genietet), ~ 7m



Zweidrahtsystem nach AEG (je Richtung ein Draht)

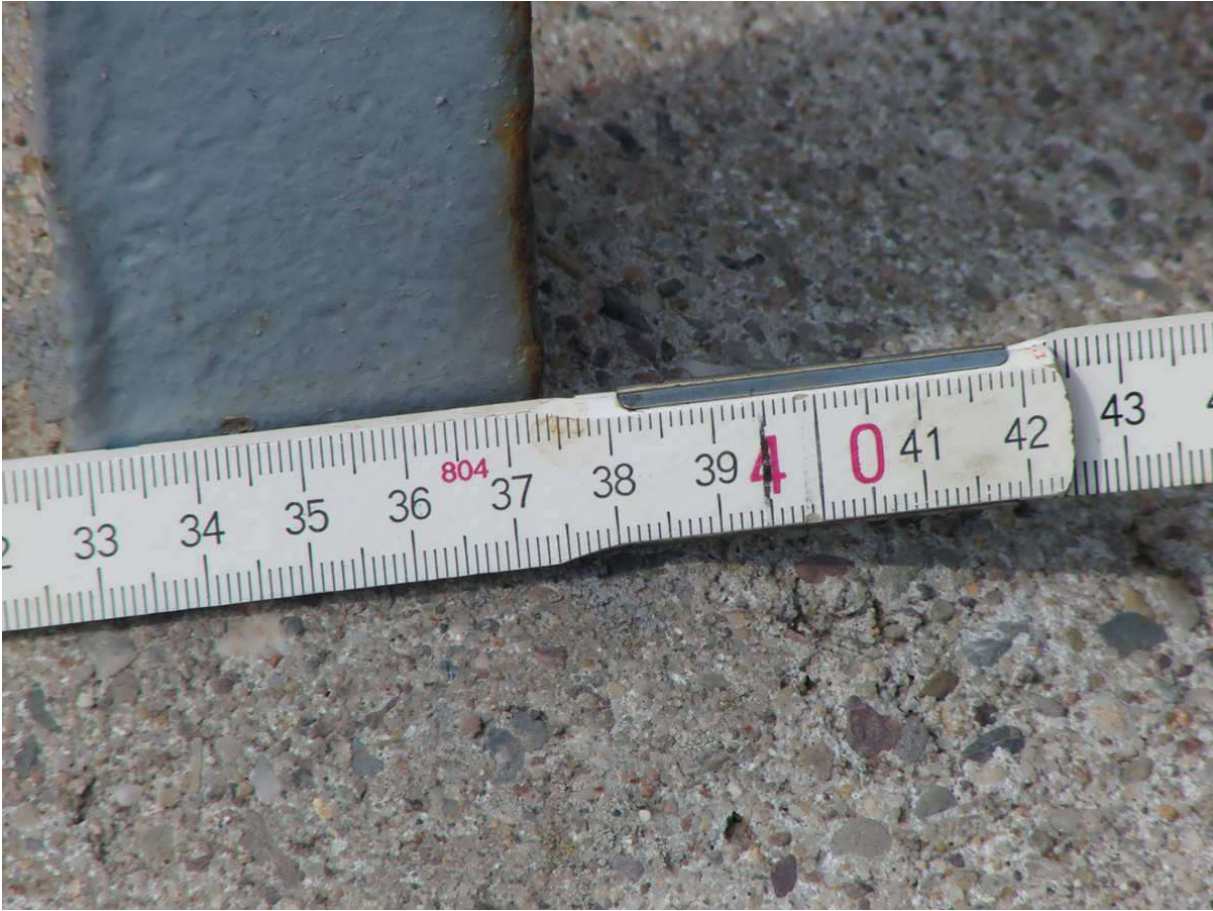
Kabel 3000V =

Freileitung 3000V =

Fahrleitung je 600V =

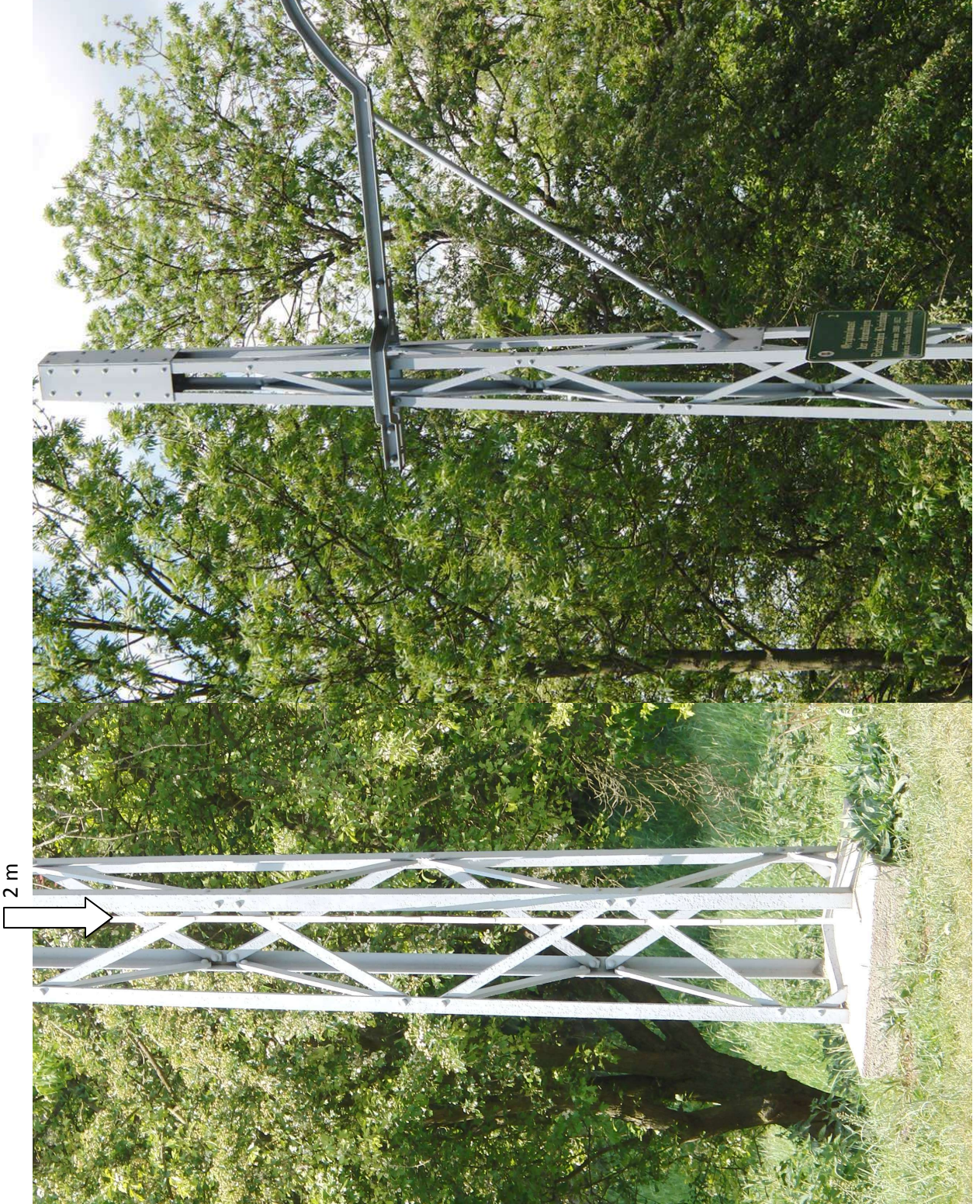
U 10

300











Informational sign on the upper part of the tower.

Informational sign on the lower part of the tower.

